

A photograph of a brick wall at Florida A&M University. The wall features a circular seal in an arched niche. The seal contains a shield with a cross and the year 1887, surrounded by the text 'FLORIDA AGRICULTURAL MECHANICAL UNIVERSITY' and 'HEAD OF THE FIELD'. Below the seal, the letters 'M' and 'Y' are visible on the brick wall. The image is overlaid with a green diagonal shape on the left and an orange diagonal shape on the right.

Enterprise Risk Management  
Advisory Committee Meeting  
September 26, 2022

# Agenda

01

**Performance Based Funding Risk Profile**

02

**New ERM Website**

03

**ERM Toolbox**

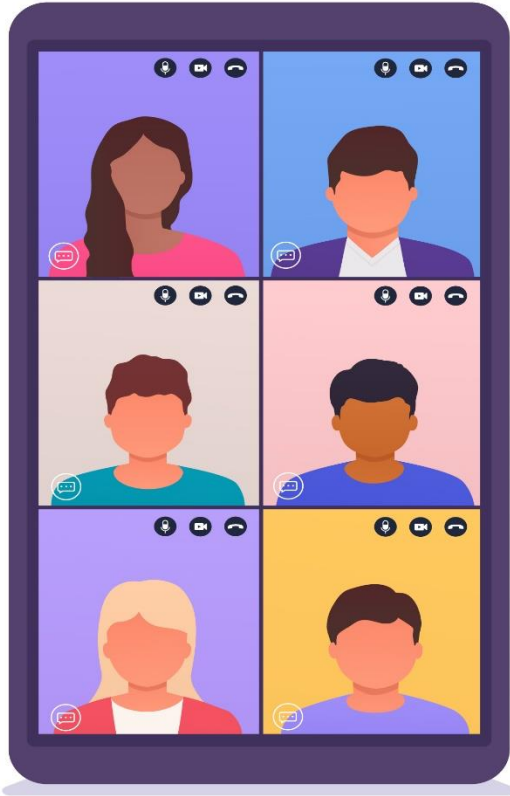
04

**Risk Bulletins & Reports**

05

**October BOT ERM Report**





# Opening Remarks

# Performance Based Funding Risk Assessment

## PBF Metric 1:

### Percent of Bachelor's Graduates Employed and/or Continuing their Education Further 1 Year after Graduation

Threats to PBF Metrics	Description	Campus Mitigation Strategies/Best Practices	*POTENTIAL* Opportunities
1. Damage to the Reputation/Brand	Damage to the University's or individual school/college's reputation or brand will impact students' ability to land lucrative job placements.	<ul style="list-style-type: none"> <li>Develop and maintain crisis communication plans.</li> <li>Enhance the marketing around student and faculty achievements.</li> <li>Increase government and corporate partnerships.</li> <li>Enhance the focus on staff and faculty serving as speakers at professional conferences and publishing in professional journals.</li> </ul>	<p>The University has a good brand and should market that brand at every opportunity.</p> <ul style="list-style-type: none"> <li>Develop targeted speaking points to share with all stakeholders.</li> <li>Create personal branding education specific to students and embed in professional development curriculum.</li> <li>Create branding workshops for faculty, students, and staff.</li> </ul> <p>Protection of and strengthening of the University's brand and reputation will indirectly help increase the scores of all PBF metrics, which will ultimately help achieve our mission.</p>

## ERMAC To Do

- CRO will post metric assessments to SharePoint by 9/30
- ERMAC Members to review and make suggested changes by 10/21
- CRO will transmit finalized assessments to SLT by 10/28
- SLT Priority Rankings Discussion to be held November 2022

# ERM Website Re-Build



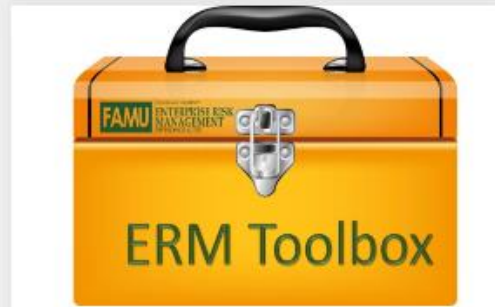
ERM Advisory Committee



ERM Risk Bulletins & Reports



ERM Staff



ERM Toolbox



ERM Training



FAMU ERM in the Community



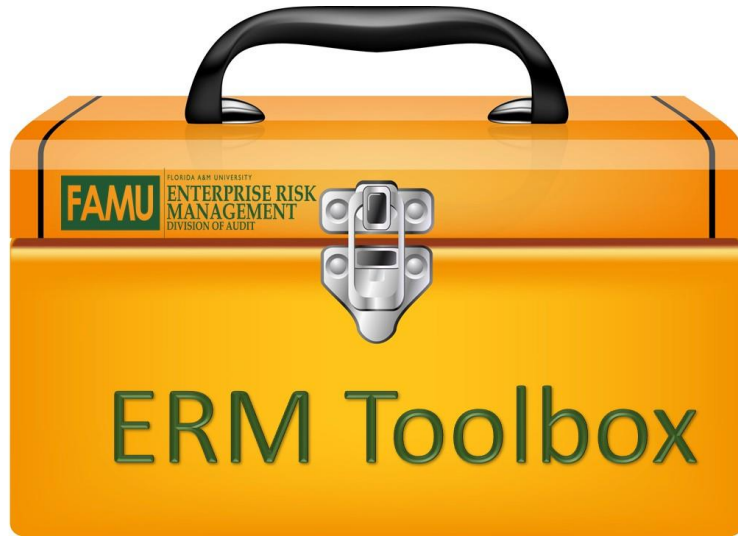
Risk Appetite



Risk Reporting Hotline (Coming Soon)



University ERM Policy



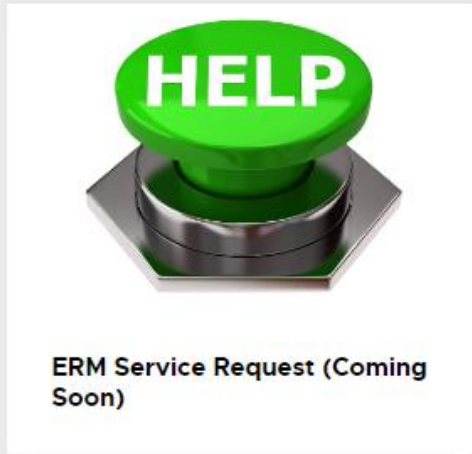
COSO ERM Overview



ERM Creating & Protecting Value



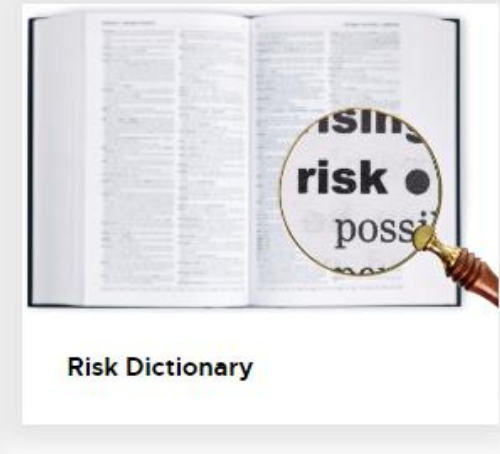
ERM Reporting Structure



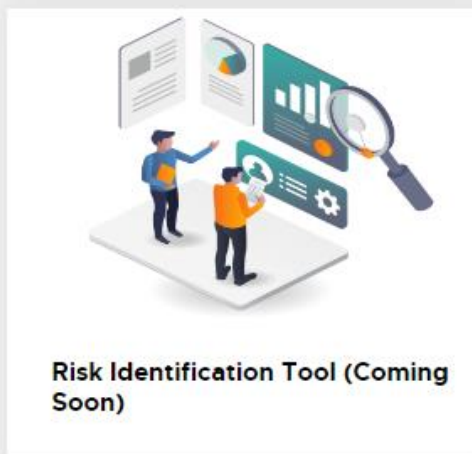
ERM Service Request (Coming Soon)



Risk & Opportunity Scales (Coming Soon)



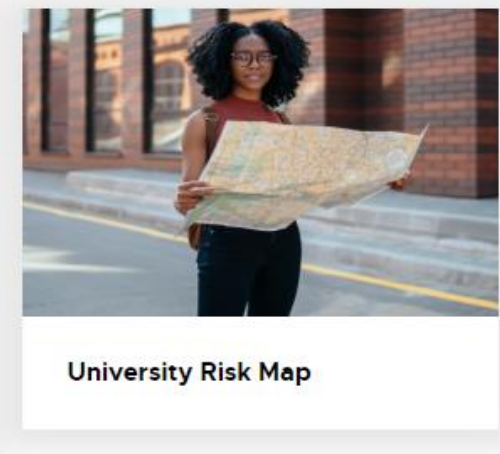
Risk Dictionary



Risk Identification Tool (Coming Soon)

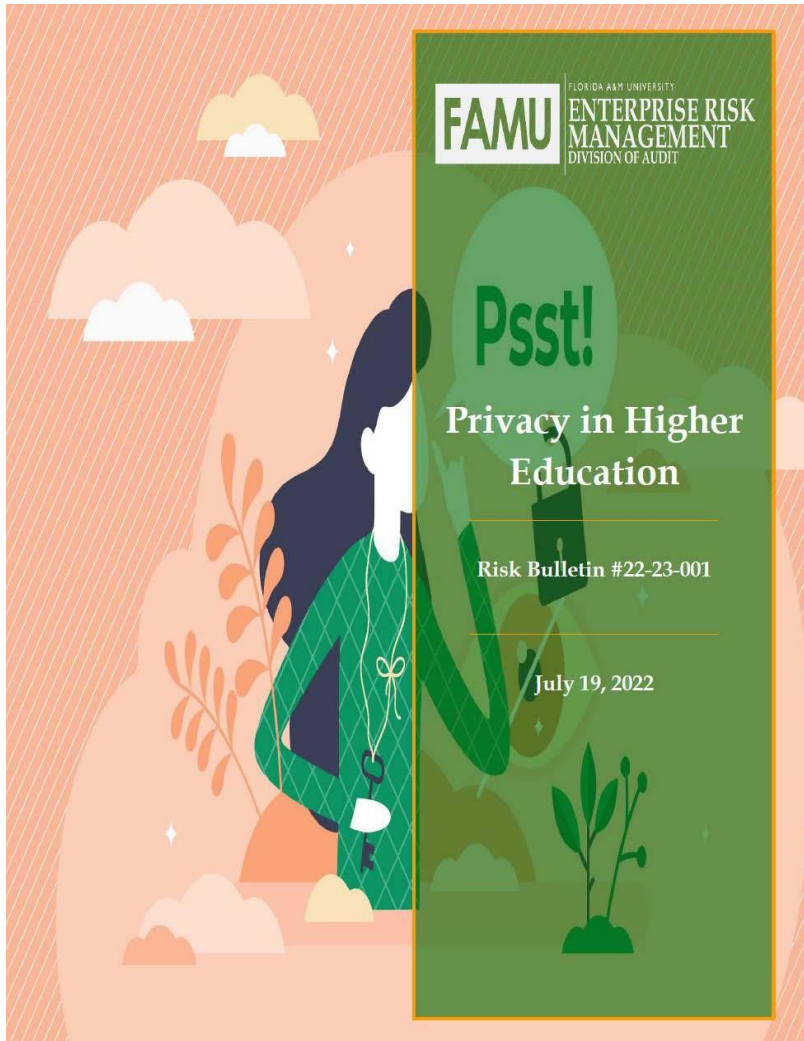


Risk Response Tool (Coming Soon)



University Risk Map

# Risk Bulletins



**FAMU** FLORIDA A&M UNIVERSITY  
ENTERPRISE RISK MANAGEMENT  
DIVISION OF AUDIT

## Psst!

### Privacy in Higher Education

Risk Bulletin #22-23-001

July 19, 2022

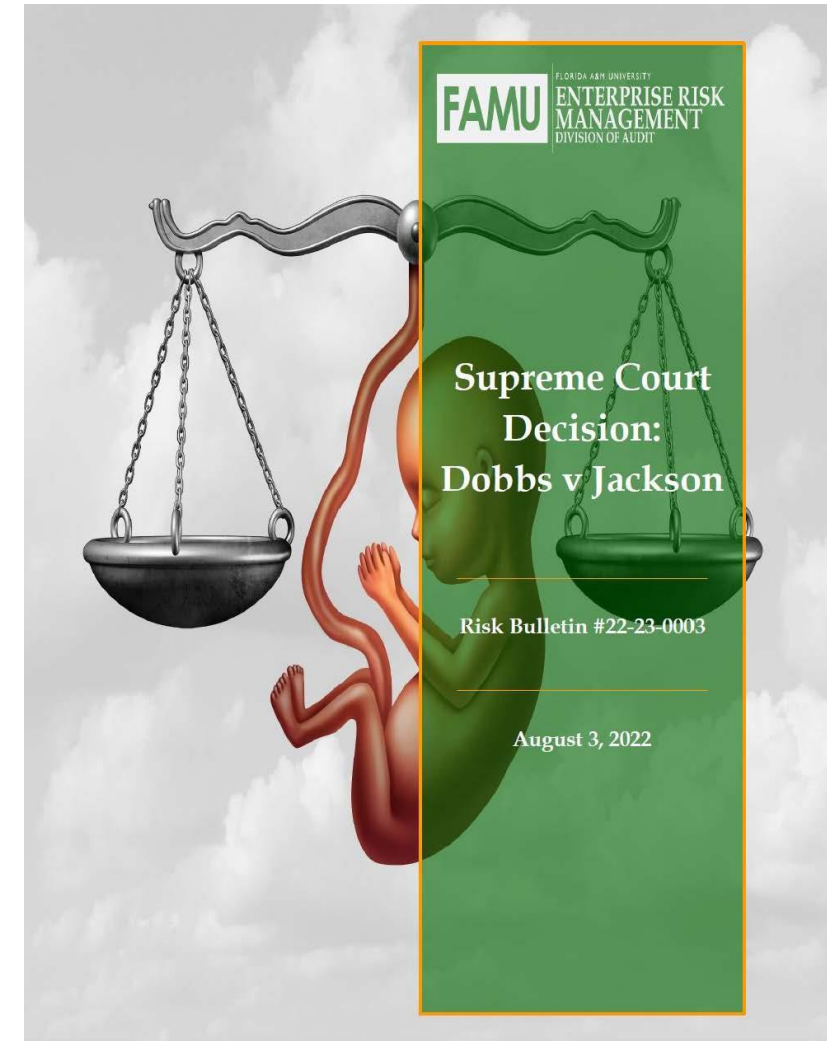


**FAMU** FLORIDA A&M UNIVERSITY  
ENTERPRISE RISK MANAGEMENT  
DIVISION OF AUDIT

## Athletics

Risk Bulletin #22-23-0002

July 29, 2022



**FAMU** FLORIDA A&M UNIVERSITY  
ENTERPRISE RISK MANAGEMENT  
DIVISION OF AUDIT

## Supreme Court Decision: Dobbs v Jackson

Risk Bulletin #22-23-0003

August 3, 2022



Enterprise Risk  
Management  
within the Florida  
SUS and Beyond

- Risk Report – Requested by BOT
- SUS Assessment to support BOG request
- Upcoming BOG Meeting Discussion on ERM





# October 2022 BOT Report

- Risk Bulletins
- Tools and Resources
- ERM in the SUS & Beyond Report
- PBF Risk Assessment & Profile



Questions



Answers

**“At FAMU, Great Things Are  
Happening Every Day.”**

**ESTABLISHED 1887**

